

## HALL PLANS

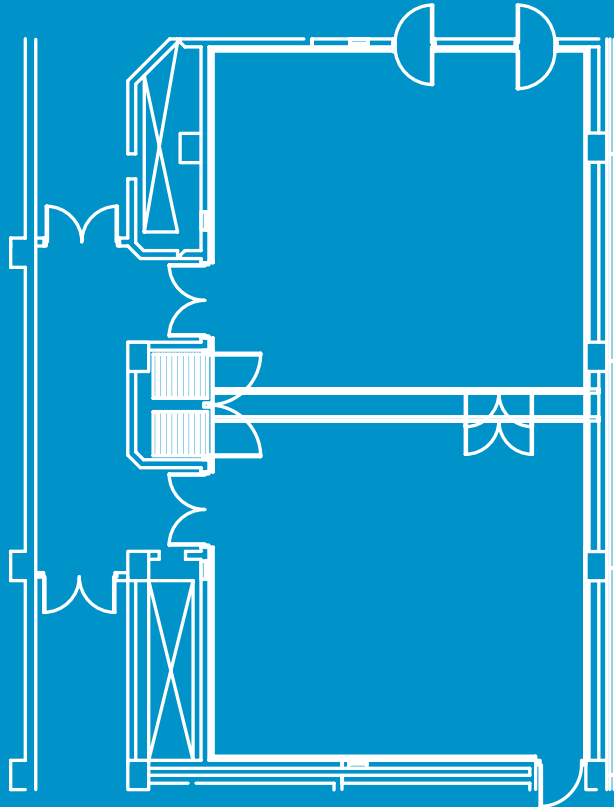
# Hall 7

When you require a dedicated meeting room for smaller meetings, training sessions or simply as a breakout area, Hall 7 provides the perfect space. Suitable as a flexible conference or fully supported function room, it can seat 140 delegates theatre style or up to 120 guests for a banquet. When sub-divided, both halves can seat up to 60 delegates theatre style.

**ICC**  
Birmingham



# Hall Plan.



## Key Details.

Additional Items	
AV Control Rooms	N
Simultaneous interpretation booths	N
Divisible	Y
Fixed Stage	N
Stage access for cars and trucks	N
Organiser offices/Dressing rooms	N
Daylight	N
Foyer	Y
Bar	Y

Seating Capacity	
Theatre	140
Cabaret	77*
Classroom	70
Boardroom	64
Banquet	120**

Please note that final numbers are subject to room layout.  
 \*Cabaret numbers are based on tables of seven with a stage.  
 \*\*Banqueting numbers are based on oval tables of ten without a stage.

## Conference Rental Package includes:



**Seating Capacity.**  
 140 theatre style; up to 120 for dinners; sub-divisible into 2 halls seating 60 delegates theatre style each



**Equipment.**  
 Lectern; top table for 3 people; 32 amp single phase power supply available as 13 amp sockets.



**Sound.**  
 PA with up to 3 cabled microphones.



**Presentation.**  
 Data projector; PC; screen; laser pointer; flipchart.



**Technical Support.**  
 Technician available on call between 08:00 and 18:00 hours.



**Disabled Facilities.**  
 Hall 7 is fully accessible for wheelchair users.



**Additional Facilities.**  
 Foyer area with bar. Goods lift.

A full technical specification is available on request.

## Dimensions

Floor area	148(m <sup>2</sup> )
Minimum height	2.4m
Maximum height	2.9m