

HALL PLANS

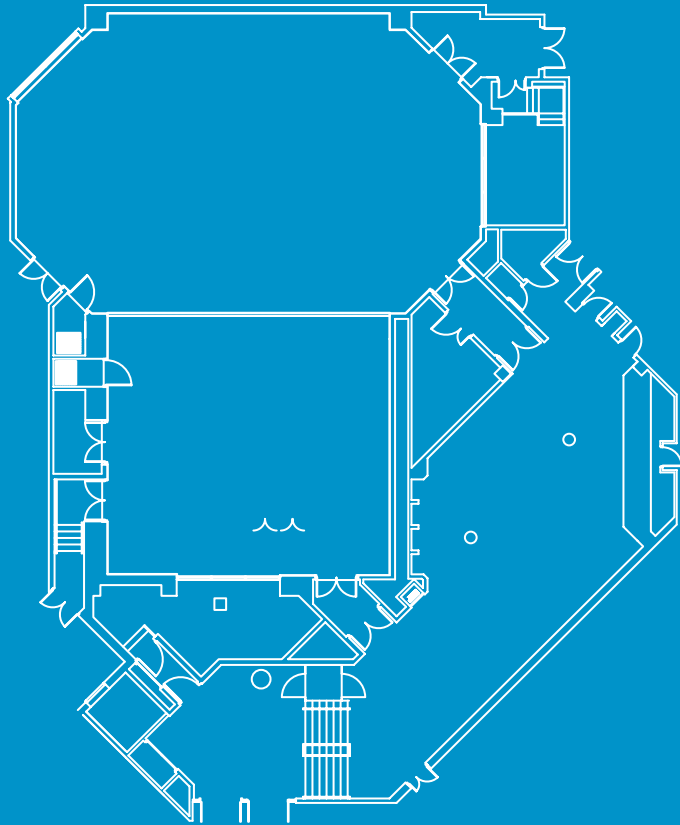
Hall 11

The largest of our medium-sized conference facilities, Hall 11 works especially well as a stand-alone conference or banqueting venue. With excellent presentation facilities, Hall 11 can seat up to 345 delegates theatre style or up to 320 delegates on oval tables. When divided, the two areas can seat 225 and 99 delegates respectively.

ICC
Birmingham



Hall Plan.



Key Details.

Additional Items	
AV Control Rooms	Y
Simultaneous interpretation booths	N
Divisible	Y
Fixed Stage	N
Stage access for cars and trucks	N
Organiser offices/Dressing rooms	N
Daylight	Y
Foyer	Y
Bar	Y

Seating Capacity	
Theatre	345
Cabaret	175*
Classroom	188
Boardroom	92
Banquet	320**

Please note that final numbers are subject to room layout.
 *Cabaret numbers are based on tables of seven with a stage.
 **Banqueting numbers are based on oval tables of ten without a stage.

Conference Rental Package includes:



Seating Capacity.
 Up to 345 for conferences; up to 320 dining at oval tables of 10**; Up to 400 for receptions; sub-divisible into 2 halls, seating 99 and 220 respectively.



Stage / Stage Equipment
 Up to 6m wide x 2.5m deep x 0.15m high, Lectern; top table for 3 people; 32 amp single phase power supply available as 13 amp sockets.



Stage Equipment.
 Lectern; top table for 3 people; 32 amp single phase power supply available as 13 amp sockets.



Sound.
 High quality conference sound system with up to 4 cabled microphones.



Light.
 Dimmable house and conference lighting systems.



Presentation.
 Data/video projector; PC with internet access; projection source switcher; 2.4m x 3m projection screen; laser pointer.



Technical Support.
 1 technician available for up to 9 continuous working hours, between 06:00 and 22:00 hours.



Disabled Facilities.
 Hall 11 is fully accessible for wheelchair users.



Additional Facilities.
 Dedicated foyer area with bar. Goods lift.

A full technical specification is available on request.

Dimensions

Floor area	360(m ²)
Minimum height	2.9m
Maximum height	3.5m